

ADETA

Alberta Distance Education & Training Association

Volume 9 Issue 1

February 2000

Australia: Special Report By Andy Asselin



One feature I love about spider man comic books is the flashback to his origins. You can pick up any issue and there it is woven into the story, a stabilizing feature of the constant change around us. Similarly, the entity known as Andy, senior instructor (on leave of absence) for the Distance Learning High School (DLHS) at Northern Lakes College (formerly AVC-LSL) is giving you this background introduction for ADETA neophytes. To bring you up to date on my latest adventure, I am currently on the island of Australia, the land down under or more specifically, Barwon Heads (south of Melbourne and Geelong). It is a "village by the sea" at the head of the Barwon river (hence the name). Here is a short report of some of my first impressions that should go beyond your normal tourist brochure.

The Good

Peter Parker (a.k.a. spider man) had a dream to finish university (he never did). Unlike Peter, I am living one of my childhood dreams by being here. I have always been fascinated by this island's flora and fauna, and so far it has been very rewarding. Like an American tourist desperate to see a bear will go to the local Canadian garbage dump, I went to a golf course to check out the kangaroos. I have also indulged myself and consumed kangaroo steak at a local restaurant. This tender sweet tasting meat is very enjoyable.

As I have not been "deep into the bush" yet, I have not been privileged to see other Aussie mammals (such as koalas and ostriches) but the birds have been a wonderful treat. Cockatoos, galas, blue wrens, kookaburras and ibis have been some of the very unexpected and pleasurable bird sightings.

The vegetation here is nothing short of spectacular. It took me a while to notice that few people have indoor houseplants...they are all growing outside. People call their yards "gardens" and it is easy to see why (vegetables are grown from a "veggie patch"). There is a constant changing of flowering plants and trees on people's front lawns. You can also see Norfolk pines and palms as tall as mature spruce trees around the city. The gum trees (*Eucalyptus* spp.) are especially breathtaking. Some varieties are

grown for their flowers (the bottle-brush); others grow wild and have a double umbrella canopy, which is quite remarkable (I plan to draw a few while I am here). I just finished harvesting a small apricot tree on the front lawn. Its rough, but someone has to do it. I've done a little landscaping on the front lawn, mostly with succulents (jade, cactus and some native plants). It has been a good way to meet the neighborhood.

The flora and fauna seem to play an integral part of the Australian culture as the Australians own more pets than any other country and from what I have seen I would say that 2 dogs per household is close to the average. Few are on leashes and

Continued on page 8

In This Issue

Australia: Special Report	1
President's Message	2
What's Happening...	3
The Five Step Participatory Model of Program Evaluation	10
ADETA Research Award	12
Conferences & Workshops	13

President's Message



Greetings, and welcome to the first message of the New Millennium. (Now that I have gotten that out of my system, I don't intend to use the term "new millennium" again for a long time.)

ADETA had a busy last few months of the Old Millennium, and the prospects are good for a hectic winter and spring:

We are presently heavily involved with the planning for *Interface 2000*, which will be held this year in Edmonton. Details of the program are available through a link from the association Website (www.adeta.org), or directly from www.interface2000.gmcc.ab.ca. *Interface 2000* this year will celebrate several aspects of ADETA's growth and development, as you will see when details become available. Watch the *Newsletter* and the Website for more, but plan to attend: June 7 - 9, 2000.

In November the ADETA Fall Workshop was held at NorQuest College in Edmonton. The Workshop attracted nearly 150 attendees, and featured a wide variety of presentations. The opportunity to talk about our work and hear about what others are doing is obviously highly appreciated. I think the workshop has come to be one of the most highly anticipated events of the year for our members. (Mark your calendar: *Fall*

Workshop 2000 will be in Calgary, hosted by Bow Valley College, October 13, 2000. Details to follow, here and at the ADETA Website.)

In line with the prominence of the Workshop I am pleased to report that we are discussing with the Alberta Online Consortium (AOC) how we might make the Workshop more accessible to their members, and how the AOC Virtual School Symposium might be useful to ADETA members. At present discussions are in the very early stages, but there is interest on both sides in making our respective events complement each other. (As you may know, the AOC consists of all of the Alberta school districts involved in virtual or distance programming. AOC holds its Virtual School Symposium in November of each year, just a few weeks after our Workshop.) More news on this front will appear in future Newsletters.

Due to the pressure of his work, Ralph Helder has had to resign from the ADETA Board. Ralph was one of two representatives of the K-12 sector. (His colleague, Lloyd Ruhl, continues on the Board representing the K-12 sector.) We wish Ralph well, and thank him for his service to ADETA.

Replacing Ralph on the Board is Jeff Hamilton of Lethbridge College. Jeff has a strong background in distance education and in technology-based learning, and is a longtime member of ADETA. He was a candidate for the Board in 1999, and lost out in the balloting in Calgary by the narrowest of margins. The Board exercised its option to fill the vacant position by appointing Jeff, who will serve until the AGM in 2001. We welcome Jeff to the Board and look forward to his contributions.

The above brings me to my final point for this message: It is time for the Association to begin looking for new Board members. There are three vacancies, president (I have served two 1-year terms as of June) and two members-at-large. The process is that those interested in serving on the Board must be nominated at the AGM, which is held as part of the annual *Interface* conference (this year, the AGM is scheduled to be held Friday, June 9, 2000; watch for confirmation of the date and time). Our bylaws state that the past-president (Bryan Shepherd) coordinates the recruitment and nomination of new Board members. So, if you are interested in serving on the Board, or know of someone you think would make a good ADETA Board member, contact Bryan (Bryan.Shepherd@norquest.ab.ca; 780-427-7766). And if you get a call from Bryan about joining the Board, consider it!

Pat Fahy 780-675-6216
patf@athabascau.ca

ADETA's Address

Box 47022
62 Edmonton Centre
Edmonton, AB
T5J 4N1

What's Happening...

Lethbridge Community College

Distributed Learning is alive and well at Lethbridge Community College. We have increasing numbers of students looking for alternate delivery courses and we are working to keep up with them. Here are a few activities in which we are engaged:

WebCT

As with most institutions in Alberta, instructor use of online tools has expanded significantly at LCC over the past semester. We are grateful for the provincial site license for WebCT as it has allowed us to deal with the huge increase in student/staff use. We hope that in two years time the government sees fit to renew the license. We have courses in eight of the eleven centres and student registrations pushing one thousand.

CIT

The CIT (Computer Information Technology) centre has been active in helping train faculty to use WebCT and other online tools. They have a STARS program in which some of their "star" students get trained in specific software and then they train a faculty member. So far both the students and faculty have expressed satisfaction with the program. We hope to expand the STARS project next semester to include students not only from CIT but other computer-related programs at the college.

Conferences

We have two instructors who will be presenting pre-conference workshops at Interface 2000. From early reports about the conference it seems as though it will be the biggest and best Interface yet.

Print-based going electronic

Many of our print-based courses that have had high enrollment for years are beginning to look for alternate ways to communicate. They have seen an increasing number of courses in which email is used for assignment/mark delivery. Currently they are exploring the feasibility of using WebCT to facilitate the communication between students and the instructor. Traditionally the print-based courses have not built in student-to-student communication. Using a tool such as WebCT may enable this facet of teaching.

Distributed Learning costs

We have completed an internal study identifying direct and indirect costs of distributed learning at LCC. This study revealed that LCC subsidizes the DL operation by 49.4% of the costs of operation. This means that DL covers 50.6% of its operating costs.

New Software

Distributed Learning has received a much anticipated student tracking software, "Foxie". The software includes new query reports, and a faster means of handling registrations since the program imports data right from our POISE system. It has proven to be user friendly! We are now prepared and welcoming the continuously increasing registration numbers! The next step is to set benchmarks for service and plan course evaluations.

Campus Pipeline

LCC is exploring the use of Campus Pipeline as a tool to communicate with our students. We are in the ini-

tial planning stages and hope to have something to look at by fall.

Jeffrey R. Hamilton 403-317-3524
hammy@raptor.lethbridge.ab.ca
<http://www.lethbridge.ab.ca>



ADETA-Net

ADETA-Net is a free service for ADETA members providing the opportunity to electronically dialogue and share information with other distance educators and trainers.

The quality and quantity of messages posted depend on the interest and care of the list members. ADETA-Net is unmoderated, in that all members are free to post queries or items of interest and concern. This is done by addressing electronic mail to ADETA-Net@SAIT.AB.CA The list will automatically forward these messages to all registered members.

Registration in the list is restricted to ADETA members thus it is necessary to have your membership in the list approved by the list owner. If you are an ADETA member, and wish to join the list, send an e-mail message to:

Susan Kerr
Susan.Kerr@norquest.ab.ca

What's Happening...

NAIT

"NAIT Forest Technology Students Go Wireless"

NAIT's Forest Technology program is taking mobile computing to the limit. Starting in September 2001, laptop computers will become an integral tool for Forest Technology students. Increasingly, Forest technologists in industry are using mobile computing technology on the job to run specialized GIS software. As well, the Forest Technology program is eager to ensure that students are able to take full advantage of the communications capacity of laptop computers. For this reason, the marriage of laptop technology and wireless networking was a natural.

In the Forest Technology instructional areas at NAIT and at the remote NAIT field facilities in Hinton, a Wireless Network has been installed to ensure students with their laptops are constantly connected to the network. "The Forest Technology instructional approach made the program an ideal candidate for the introduction of mobile and wireless technology," said Jeff Zabudsky, Dean, Technology and Curriculum Innovation. "These student are constantly on the go, travelling by bus to Hinton and back," Zabudsky said.

NAIT is using Lucent network technology that provides a wireless connection to a network access device (so students can access network resources or the Internet) or peer to peer between users. This is particularly useful on the bus ride as it allows the students to connect to the teacher's laptop to download files.

The wireless Lucent product was one of the three finalists in the Best Networking Hardware category at the Fall 99 Comdex.

Bill Fricker 780-471-7862
billf@nait.ab.ca
<http://www.nait.ab.ca>



ADETA Board

Patrick J. Fahy, President
Ph: 780-675-6216
Fx: 780-675-6170
patf@athabascau.ca

Bryan Shepherd, Past President
Ph: 780-427-7766
Fx: 780-427-2029
bryan.shepherd@avc.ab.ca

Lloyd Ruhl, Vice-President & Secretary
Ph: 780-674-5333 ext. 156
Fx: 780-674-4712
lruhl@phrd.ab.ca

Beth Jenkins, Treasurer
Ph: 780-458-1794
ejenkins@compusmart.ca

Val Marshall
Ph: 780-849-8710
Fx: 780-849-3312
marshall@yourfuture.ab.ca

Jeffrey R. Hamilton
Ph: 403-317-3524
Fx: 403-320-1461
hammy@raptor.lethbridgec.ab.ca

Fae Jackson
Ph: 403-240-6041
Fx: 403-240-6759
fjackson@mtroyal.ab.ca

Aurora College

On January 31, 2000 the web site <http://www.frozentoes.com> opened for business. It is a virtual classroom for Northern Studies being developed in the Canadian north by the Arctic Millennium Project, incorporating traditional knowledge. The site contains lesson plans, projects, resource material and Arctic Tidbytes of information. Development will be ongoing, with users being requested to showcase their Northern Studies projects. Student projects will be featured. There will be real-time coverage of an expedition across the Arctic, starting in February.

Linked to the frozentoes site is that of one of the partners in the Arctic Millennium Project, the Globe Program at <http://www.globe.gov>. This program brings international caliber scientists into the classroom using the World Wide Web. More than 7000 schools in over 80 countries are working with the program.

Come and explore the Canadian North in a virtual classroom created in the north by northerners.

Janet Mundrick
jmundrick@aurcoll.nt.ca
<http://www.frozentoes.com>



What's Happening...

NorQuest College

NorQuest College was the site for the ADETA Fall Workshop in November. More than 150 delegates gathered for the conference focusing on the practice strategies and tools of distance education. This conference was the culmination of a week filled with activities to celebrate the official name change of our College from Alberta Vocational College to NorQuest College.

Our Media Development Centre has developed and piloted an on-line course called Office Supervisory Skills using WebCT. This is the Colleges' first WebCT course. Evaluations were positive and the course is due to run again in late February.

NorQuest College, with funding from Alberta North, will be presenting a series of WebCT workshops for members of Alberta North.

The Educational Technologies Centre now offers student email accounts when requested an instructor. It is web-based and easily accessible to students across our service region.

The Learning Server, a synchronous audio graphic tool, continues to be widely used at our Regional campuses. Over 138 students take their courses using this Internet-based tool. We also have students from Portage College and the Yellowhead Regional Educational Consortium (at Hinton and Edson).

Janice Norman 780-427-8166
janice.norman@norquest.ab.ca
<http://www.norquest.ab.ca>



Bow Valley College

Bow Valley College has successfully launched a pilot of a new WebCT course that will be accessible to anyone on the Internet. This is the Web Site Development using MS FrontPage course. This course is the first in a series of five courses that is a part of the Bow Valley College's Web Site Development Certificate program offered by the Business and Industry Training Department. The design of this course will allow students to begin the course at any time and complete the course on a schedule that best suits their circumstances and needs.

In order to take this course, distance learners will need access to a computer connected to the Internet and MS FrontPage 2000™. The learning activities in the courses are based on small projects that will lead the learners to complete the construction and management of a real Web site on the Internet.

Web Site Development Advanced is the next course in the program to be launched in April 2000, with the rest to follow. All of these courses utilize the support and communication tools in WebCT to provide an interesting and interactive learning environment.

Bow Valley College is also piloting a brand new multi-media streaming server to stream audio and video clips that demonstrate the more complex techniques and concepts to distance learners. The Web Site Development using MS FrontPage course is the first course to make extensive use of this new facility with over 15 video clip demonstrations.

If you would like to know more about these courses contact Rod Corbett.

Rod Corbett 403-297-4829
Rcorbett@bowvalley.ab.ca
<http://www.bowvalley.ab.ca>



Paying Your Dues

No, this isn't an article on career development. Or maybe it is! Good career moves happen to ADETA members. If you haven't renewed your membership in ADETA for 1999-2000, your name will be removed from the mailing list. Then who will know that you are among the movers and shakers in Distance Education in Alberta?

Don't let the absence of a form stop you. Simply send a cheque for \$35 made out to ADETA, along with your name, job title, institution, postal and e-mail addresses (or whatever applies) to

ADETA,
Box 47022,
62 Edmonton Centre,
Edmonton, AB T5J 4N1.

Beth Jenkins, Treasurer

What's Happening...

Alberta Distance Learning Centre

The Alberta Distance Learning Centre will continue to work in partnership with schools and jurisdictions in the 1999-2000 school year. We are committed to providing cost-effective distance education programs, which meet the needs of students across the province. We serve students on home education programs as well as students supplementing their in-school programs with distance education courses.

We have recently expanded our service in Southern Alberta with the opening of our new Lethbridge office in the Palliser Education Centre in June 1999. Amalgamation of the Distance Learning Option South (DLOS) program and Alberta Distance Learning Centre (ADLC) allows us to provide a very cost-effective service to all students in Southern Alberta.

We have reduced the cost of tuition considerably to students enrolling in ADLC through Lethbridge. Expansion has added 40 new Basic-Plus school partners to our program. Schools in the Lethbridge area have achieved completion rates of 94 to 96 percent under DLOS. A similar program operating out of Barrhead and Edmonton involving a similar number of schools and jurisdictions has achieved completion rates ranging from 80 to 96 percent. We believe that we have something to learn from the success achieved in Lethbridge and that the strategies developed in Lethbridge will help to improve what we do in Barrhead, Edmonton, and Calgary.

We are fortunate in that most of the former DLOS staff are now with us. We believe that the strength in our

distance learning program is not in the materials, which everyone has access to, but in the staff who teach our courses.

The new Calgary office has proven to be such an enormous success that we are again moving to newer, larger facilities at 5921 – 3rd Street SE, Calgary. (Last move in August 1999) Our regional offices provide the backbone to improve service in most regions. Each office offers over-the-counter registration service and carries a sizeable inventory (near \$100,000) in each location. Exam writing centres provide year round exam writing service. Fewer registrations are processed through Barrhead each year as regional centres grow.

The rapid increase in completion rates has not only been good for us but has brought significant benefits to our partners. We have much to gain from higher completion rates, but it has not been at the expense of our partners. We receive our base funding under the divestiture agreement between Pembina Hills Regional Division and Alberta Learning. Our partners continue to receive their normal funding from Alberta Learning. We take little funding away from our partners other than our tuition fee and the cost of materials needed. Schools using our program are able to claim full CEU funding for courses taught by ADLC. Under site-based management, this funding often returns to the community where the student resides. This strengthens our partners across the province, whether they are schools or jurisdictions. There is a great deal of comfort in knowing that ADLC and our distance learning program is an important component in keeping

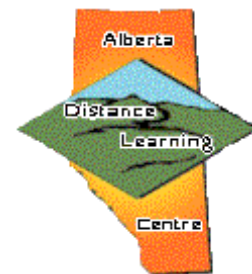
small community schools viable across the province.

Distance learning is changing rapidly, and ADLC is prepared to develop new partnerships. Our Contracted Online Services works in partnership with other schools and jurisdictions to provide online services at low cost. (\$40 per credit plus textbooks). We use WebCT to deliver our online programs. Most recently, we have implemented synchronous delivery of Mathematics 31 and Physics 30 to schools located in Prairie Land Regional School Division.

A major new initiative is the redevelopment of our senior high online courses. This should result in further improvement to the core courses we provide to our partners.

I have not spoken of benefits to students, but in the past year we have awarded over 44,000 high school credits to our students. Distance Learning Options South awarded 8,000 credits during the same time period.

Lloyd Ruhl 780-674-5333 Ext. 156
lruhl@phrd.ab.ca
<http://www.phrd.ab.ca>



What's Happening...

Alberta Online Consortium

The Alberta Online Consortium is pleased to report that institutional membership has grown dramatically since its inception 8 months ago. The realization that institutions working together to support online education can produce shared benefits; the Consortium has grown to include 46 of Alberta 62 school districts and 10 of Alberta's 26 postsecondary institutions. With increased membership from the postsecondary sector come new challenges. The first challenge is how best to support the multiple needs of postsecondary members. The Consortium will shortly be undertaking a survey of postsecondary members to ascertain how the goals of the Consortium should be aligned to the needs of its new members.

One area in which the Consortium will support postsecondary members is to expand and rename the annual Virtual School Symposium to the Alberta Online Symposium. While the last Symposium was once again a success with over 300 educators from across Alberta and Canada representing all educational sectors, it seems an opportune time to bring together all online educators to share their insights into the education of students using existing and emerging technologies. Consequently, planning for this year's Symposium is underway. This year's **Alberta Online Symposium** will take place November 22-24 in Edmonton at the Mayfield Inn. A Call for Papers will be issued shortly, and I hope many ADETA members will consider submitting a conference proposal. As more information becomes available, it will be posted to our web site at www.albertaonline.ab.ca.

Finally, after receiving feedback

from members at the first Annual General Meeting in Calgary in October 1999, the Consortium will be working on three new initiatives. First, members identified a need to have research undertaken concerning the effectiveness of online education at the K-12 level. To that end, the Consortium will be issuing a Request for Proposals (RFP). The RFP will be distributed to Consortium members and will be posted on the web site. I encourage researchers to review the web site for more information towards the end of February.

Second, the Consortium will be adding its voice to the many others supporting the development of a Digital Content Repository for Alberta. A repository will allow institutions to share existing digital course materials and track their use.

Finally, the Consortium is actively planning discussions concerning how best to support the use of WebCT across the province. A shared 7x24 student and staff help desk, to mirroring online courses among institu-

tions, hosting courses for smaller institutions, sharing instructor training and the development of resources to help students maximize their online learning experience are all topics under consideration. If you have any suggestions or wish more information about these initiatives please contact Bill Muirhead at bmuirhead@edc.gov.ab.ca

Finally, since the last newsletter the Alberta Online Consortium has moved into new offices. Our new address is 11160 Jasper Avenue, Edmonton, Alberta, T5K 0L2. Our new telephone numbers are (phone) 780-422-3448 and (fax) 780-422-5129.

Bill Muirhead 780-422-3448
bmuirhead@edc.gov.ab.ca
<http://www.albertaonline.ab.ca>



About this Newsletter

Published 3 times a year by the Public Relations Committee, as a service to members of the Alberta Distance Education & Training Association.

Next issue: May 2000

Deadline for submissions: May 5, 2000

Editor: Rod Corbett (403) 297-4829

E-mail: RodCorbett@corvelle.com

Advertising Rates:

Full page: \$100 1/2 page: \$65 1/3 page: \$35 1/6 page: \$20

Camera ready artwork supplied

Statements, opinions and points of view expressed by the writers do not necessarily represent those of the officers or members of ADETA.

Australia: Special Report

Continued from page 1



Andy Asselin

there is a surprisingly lack of doodoo. There are at least three prime time TV shows that feature garden and pet care. So if you enjoy spectacular vegetation, Australia certainly has a lot to offer (and I haven't been to the tropics yet).

The Bad

Peter Parker obtained his super powers from a radioactive spider's bite. Spiders' bites can be a different story over here. One of my main concerns arriving here was to get to know the dangerous animals, mainly the snakes and spiders. If spiders make you queasy, skip the next paragraph, you won't want to read what I have typed there.

Here are some spider's items taken from Bert Brunet's "Spiderwatch". Mouse spiders (highly venomous), various funnel webs, the most infamous of all being the Sydney funnel-web (deadly, carries atroxotoxin, one of the most dangerous of all toxins found in the animal kingdom) will start us off. I've seen one of the funnel webs, very impressive. Then there is the red-back (female's venom has proved fatal). Another sinister one is the white-tailed, nocturnal and adapted to living in houses, especially bedrooms and bathrooms (do you really have to go take a pee during the middle of the night?). While not lethal, its venom contains flesh-dissolving enzymes and a bacterium believed to cause the spread of an in-

fectured ulcerous sore. In some cases toes and fingers have required amputation. Of course people do find it strange that I have a curiosity for spiders, but it has been well rewarded as I have found a bird dung spider (the name says it all) and some huntsman spiders, not lethal but as a relative of the tarantula quite large (up to 16 cm, around 6 inches). "That's a small one" the locals tell me at each sighting and then continue to evoke stories similar to fishing lore. "I saw a huntsman once and it was at least this big." There are a lot of spiders around here but for the most part, you leave them alone, they will do the same.

Insofar as snakes are concerned, it has been thankfully disappointing; I have seen a brown snake at a fair but none on my explorations, as the weather has been relatively cool so far. Most Australian snake species are deadly and none are rattlers. So much for carefree walks into the woods (I have taken a few anyway). Most snakes are protected, something to the effect that you cannot kill a snake unless it trying to kill you.

The beaches, where I spend a lot of my time are pretty safe. No crocs or box jelly fish this far south. The blue ringed octopus is rare and sharks, while common do not seem to give much concern although there is a great white roaming the region. Shark planes fly around the most popular beaches to keep them safe. So far my scariest encounter (apart from spider sightings) has been a beautiful crab coming up from beneath the soft sand and grabbing my big toe while I was attempting to get a seashell.

The beaches here are the ultimate "do nothing" experience. With the weather being so cool (mid 20's)

they are nearly deserted. I have miles of pristine beaches all to myself, what a treat.

The Humans

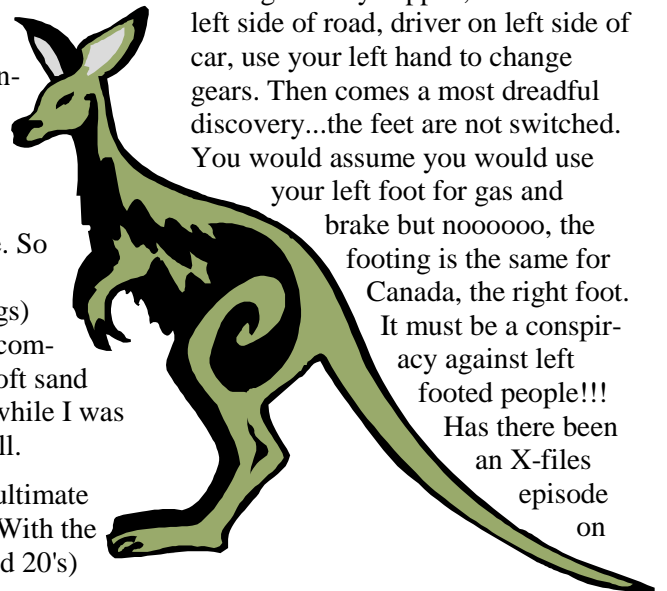
Spider man swings along the high rise buildings of New York. If he came to Australia, he would quickly notice that Geelong's older city buildings have a distinct British design of the Victorian and Edwardian era.

A new country offers all sorts of eye opening observations. While on the surface many social items may appear to be the same, there are a lot of subtleties and differences you cannot help but notice. Many of these differences are cultural while the local environment influences others.

Architecture can show cultural effect while ceramic roof tiles and outside water heaters are indications of a milder climate.

A lot of items are switched and this is to be expected. You turn on lights by flicking the switch down. Cars drive on the other side of the road, it takes a while to get used to crossing the street. Cars seem to be switched too; the driver's side is opposite to what we are used to. Seems fair enough so far. So you try to imagine driving entirely flipped, car on the left side of road, driver on left side of car, use your left hand to change gears. Then comes a most dreadful discovery...the feet are not switched. You would assume you would use your left foot for gas and

brake but noooooo, the footing is the same for Canada, the right foot. It must be a conspiracy against left footed people!!! Has there been an X-files episode on





this topic? Bad enough that left handed people have been persecuted throughout the centuries what about the left footies? Where is spider man when you need him?

While these differences do make for some humorous head scratching, some items make you question what you have at home others make you wonder and some make you question your perspective on things. Here are some examples.

I was sad to see that petrol (gas means propane here) stations still sell leaded gasoline. However, cars last longer (a lot of older cars on the road) so the transition to unleaded petrol will take longer. Considering that the number of cars here is far less than the US, and the economic value of a car has put a new perspective on the issue which might require a bit more patience and tolerance. What do you think?

There is one item however, that just gives me the creeps, the Australian lawn mower. I apologize to any Australians reading this but I have talked

about it and thought about it and it still just drives me crazy. Nearly all the lawn mowers I have seen are petrol and have the exhaust for the grass at the back. The newer ones have a catch, the older ones have a plate. I have only used two different lawn mowers (older ones) and it has been certainly by far the worst lawn mowing experience I have had. Hit a dusty spot and the smoke flies into your face. My shoes and bottom legs are grass covered by the time I am finished. I am still looking to purchase an electric side throwing mower and it will probably be a pricey item, but if there is anything that needs to be changed here, this is it.

On the other hand here is an idea that I strongly promote for us back home, even though we are a country rich with water. Unlike North American toilets, the Australian toilet is push button, with two buttons. Took me a while to figure what it was about since they both flushed, but one is for a half flush and the other gives a full flush. It saves water, and is an excel-

lent idea for a water-restricted area such as this (there is a three-year drought here even though it drizzles quite often). This is something that would be a nice addition to North America, the push button toilet.

The Next Episode

I have barely scratched the surface of my observations and anecdotes but hopefully, you will have enjoyed a taste of the adventure over here. If any of you have any desire for photos or more in-depth first hand coverage of some of the sights, and would be willing to cover the cost, please feel free to make a request. The Melbourne state of the art aquarium has just opened (Jan 1) and I am very close to a major surf center, botanical gardens, several universities, art galleries and other neat places that you might wish to place on your life long learning plate.

I am slowly getting back to my electronic entity mode. Feel free to write (1 Wandin Court, Barwon Heads, Victoria, Australia, 3227, phone: 011 61 3 5254 1408) or you can email me at "andy@iloveapple.com".

I will conclude with a reiteration of a common life lesson: a real appreciation for what you have. Australia is a beautiful country, but I find, believe it or not, that Christmas without snow is just not the same. When the U.N. states that Canada is the best country of the world to live, believe it.

The spider man philosophy revolves around the maxim "with great power comes great responsibility". I believe I express great thoughts and feelings, which are real forces. I continue to dedicate substantial time with encouraging thoughts and feelings to the wonderful community that navigates through ADETA. You have an agent, sitting on the beach staring across the ocean wishing you well. It is a reflection of your inner beauty.

Andy Asselin 011-61-3-5254-1408
andy@iloveapple.com

The Five Step Participatory Model of Program Evaluation



By Daph Crane
Bow Valley College

We all like to think we work in the best program in our content area and that we are providing great services to learners, but how do we know it is the best program? We need to keep ahead of the other programs by constantly improving ours, but how do we know that what we are doing or propose to do is the most effective and efficient? How do we make a good program better? An evaluation that involves a variety of stakeholders will assist in making informed decisions.

Program Evaluation is a methodical process of gathering information about a program, course or product that enables well-informed decisions to be made. It involves studying the characteristics of the program, including a systems view of the structure, activities and organization. Program evaluations are carried out for a variety of purposes:

- to identify program weaknesses and to make recommendations for improvements
- to ensure that program goals, learning outcomes and objectives are being met

- to gather information to aid in decisions concerning the future of the program, to continue, expand, reduce or eliminate the program, or aspects of the program
- to account for resources used, including financial, human, and technological
- to determine the feasibility of collaboration with other agencies or institutions
- to monitor compliance with regulations or standards
- to verify learner achievement
- to determine learner satisfaction
- to identify needs

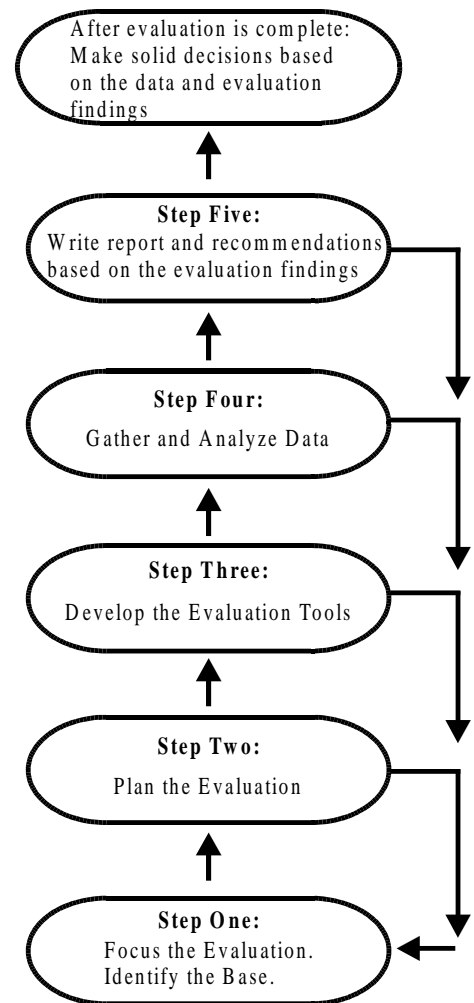
All educational programs should undergo evaluation at regular intervals including distance education programs. The general procedure for the evaluation is the same regardless of the mode of delivery of the program. The Participatory Five Step Model can be used for any program. The tools used to collect data can be the same, although some minor changes may need to be made. For example a focus group with learners who are on campus is easy to organize. For learners who are miles away from one another this becomes more complex. Teleconferences, chat lines, or videoconferences may be used.

The Learning Quality Centre, Bow Valley College uses a Five Step Participatory model of Program Evaluation for existing programs. This model has been adapted from: Porteous, N., Sheldrick, B., Stewart, P. (1997). *A blueprint for public health management, a program evaluation toolkit*. Ottawa: Public Health Research, Education and Development Program.

The Participatory Five Step Model is based on having those directly in-

involved in the program involved in the planning, and implementation of the evaluation. For example, to evaluate a particular academic program, instructors, educational assistants and supervisors involved in the program will form an evaluation team. At Bow Valley College this team, with guidance from the Learning Quality Centre, (LQC) will carry out the program evaluation. Each step requires the evaluation team to think critically about various aspects of the program.

Figure 1. The Participatory Five Step Model of Program Evaluation. Note how there is a loop back from each step.



The participatory five-step model of program evaluation uses the Logic Model to describe a program. The Logic Model considers: Who, What, Why and How of the program. (It uses a systems approach, looking at the program from many angles.)

Here is a brief outline of the steps of this model.

1. Focus the Evaluation

(This is a long step, but it helps to ensure that the evaluation is useful.)

- A. Identify and clearly state the purpose of the evaluation.
- B. Describe the program create the Logic Model. The Logic Model is a diagram describing the program in terms of resources, activities, outputs, customers, and outcomes as well as the relationship between them. {Consider How (resources, components activities, outputs), Who/Where (customers reached), What (short term outcomes), and Why (long term outcomes).}
- C. Consult with stakeholders to ensure their needs will be met.
- D. Develop the big evaluation questions. (The questions the evaluation will answer, not the individual items on the data collection tools.) Use the SMART principle to ensure the questions are appropriate. (Specific, Measurable, Actionable, Relevant, Timely.)

2. Select Methods

- A. Establish expectations. (What is it that is expected from the program? What is an acceptable standard for the question?)
- B. Develop a data collection plan. Consider what is available, what needs to be collected and the variety of collection tools that may be used.
- C. Determine the logistics and fea-

sibility. Who will be involved in the data collection? Are time, money, and other resources available?

3. Develop Tools

- A. Examine existing tools.
- B. Develop data collection tools and measures. Be sure this is based on the work that has already been done. Make sure tools are user friendly, clear and the data collected will be useful. Use the SMART principle again.
- C. Assess the quality of the tool for content and clarity as well as stability and reliability.

4. Gather and Analyze Data

- A. Select data collectors. Different tools require different skills from data collectors.
- B. Analyze qualitative data. Keep this section qualitative; try to avoid injecting personal bias/opinions.
- C. Analyze quantitative data. Use numbers or percentages to report results.

5. Make Decisions

- A. Interpret findings and draw conclusions.
- B. Make decisions and draw action plan.
- C. Report the results of the evaluation. (You will need to include the great, the poor and unusual or unexpected findings.)

The participatory approach is used as it allows those involved in the program to take ownership of the evaluation. It is anticipated that by being involved in the evaluation that participants will more readily accept the findings of the evaluation. It is more likely that the evaluation results will be acted upon. Often an external evaluator will write a report

that is shelved and not used. This is less likely if the participatory approach is used.

The participatory approach should provide a greater acceptance of the evaluation findings. It also provides the opportunity for participants to examine all aspects of the program and not just the portion with which they work.

The biggest draw back of this approach is the time that it requires. Instructors are busy and one more meeting to attend is frustrating. It is also difficult to schedule a time for a full committee of instructors with different schedules to attend meetings. Another concern is the tendency for bias or influence to enter the process. This is why it is important to have someone from outside the department concerned to coordinate the evaluation. The report writing is a challenging task as it is difficult to get the committee to agree on all points. Also, there is a risk of those involved in the program to let bias or feelings enter the report. Therefore, it is important to have an unbiased person to write the final report with input from the committee.

This proactive approach invites all to become involved in the evaluation process. We know what needs to be done, we know the reasons for doing it, we can build a team that can do it together.

The LQC has used this model for one evaluation. Currently adaptations of the model are being explored to tailor it were for to the BVC setting. These adaptations are being piloted with an evaluation of the Office Administration Program.

Continued on page 12

References:

Fink, A. (1995). *Evaluation for education & psychology*. Thousand Oaks, CA: Sage Publications, Inc.

Grotelueschen A. (1980). Program Evaluation. In Knox (ed.) *Developing, administering, and evaluating adult education*. San Francisco, CA: Jossey-Bass Publishers,.

Jordan, G., McLaughlin J. (1999). *An American perspective on the Logic Model process for telling your program's performance story*. Unpublished manuscript.

Porteous, N., Sheldrick, B., Stewart, P. (1997). *A blueprint for public health management, a program evaluation toolkit*. Ottawa: Public Health Research, Education and Development Program.

Daph Crane 403-297-8662
dcrane@bowvalley.ab.ca
<http://www.bowvalley.ab.ca>

ADETA Research Award

As practicing distance educators and trainers, we're too often aware of the need for research and reflection on the complex business of teaching and learning at a distance. In order to support and encourage this reflection, ADETA established an annual award for the best research project completed by one of its members. This year the award consists of a free registration to Interface 2000, which will be held June 7th to 9th, 2000 at Grant MacEwan College. The winner will also receive \$150.00 to offset any expenses incurred while attending the conference.

The criteria for the selection of the winning submission are:

1. relevance to ADETA members
2. quality and rigor of the research design and implementation
3. impact of the results on the theory or the practice of distance education

The selection committee is chaired by the past president of ADETA and consists of interested ADETA members. The committee is not looking just for scholarly or theoretical submissions, but also for projects that systematically examine or evaluate practices of our members. The project should be documented in such a way that the results or findings are accessible to ADETA members and the general public either through electronic or paper format. The project summary and results will be printed in the ADETA newsletter.

The deadline for submissions has been set for April 14, 2000. Please

forward your submission by mail, fax, or email to me at the address below. If your research is already published on line please provide the URL.

Bryan Shepherd 780-427-7766
Bryan.Shepherd@NorQuest.ab.ca



Conferences & Workshops

CADE's Wise & Witty Wednesdays

CANADIAN ASSOCIATION
FOR DISTANCE EDUCATION

The dates for the Year 2000 Wise and Witty Wednesday Professional Development workshop series (Anglophone) are as follows:

Wednesday February 23, 2000 -- 12 Noon EST

Wednesday March 29, 2000 -- 12 Noon EST

Wednesday April 26, 2000 -- 12 Noon EST

This season, we will be taking advantage of a number of distance learning technologies -- some newer, some tried and true—to conduct our workshops. In all cases, the format will involve both synchronous and asynchronous activities. Feel free to forward this email to others who might be interested outside the CADE milieu throughout Canada or abroad.

I look forward to hearing from you throughout this series as we make our way to CADE 2000 in Quebec City—a conference that is shaping up to be another stellar event due to the efforts of our host partner, Université Laval.

Where:

Across Canada and beyond by audio-teleconference and subsequent asynchronous electronic discussion.

Cost:

CADE members: \$15 per person
Non-members: \$20 per person
(Special rate for 10 or more participants)

To Register or for more information, contact:

Jeff Zabudsky, Co-chair CADE Professional Development Committee
Tel: 780-491-3912
jeffz@nait.ab.ca



ADETA

ADETA Fall 2000 Workshop

The ADETA Fall 2000 Workshop will be held in Calgary on October 13, 2000. It will be hosted by Bow Valley College in downtown Calgary. The theme of this one-day workshop will be Collaborations for Success. Plan to attend. Check the May ADETA newsletter for more information.

BOWVALLEY
C O L L E G E

16th Annual Conference on

DISTANCE

Teaching & Learning

August 2-4, 2000
Madison, Wisconsin

Plan to join more than 1000 colleagues from around the world at this leading forum on distance education and training. Practitioners, managers, and researchers from education, business and industry, and government agencies will come together to exchange information and explore new developments at this 16th Annual Conference.

To receive a printed brochure that describes the conference, please call 1-800-462-0876. The brochure is also available at the conference website: <http://www.uwex.edu/disted/conference/>



Conferences & Workshops

ADETA

ADETA Professional Development Series 2000

March

Tuesday, March 7, 2000 from 3:30 to 4:30 p.m.

Presenters: Lucelle Prindle - Lethbridge Community College, and Pat Larson - Northern Lakes College

Topic: Learned Lessons: A Cooperative Development Project for CTS Information Processing

Presentation Description

Since 1997, Lethbridge Community College and Northern Lakes College (formerly AVC Lesser Slave Lake), have partnered in developing provincially certified distance learning materials for Career and Technology Studies CTS Information Processing. This initiative was funded by Advanced Education and Career Development with guidance from Learning Technologies Branch of Alberta Education. An additional partnership was struck with Learning Resources Distributing Centre for producing and distributing the materials. Many lessons, both productive and painful, have been learned about what enhances and impedes a collaborative project.

Was it easy? No is an understatement! What was learned? Lots of do's and don'ts! This session identifies key factors that contribute to or curtail the effectiveness and efficiency of jointly developing curriculum materials for print or on-line. Some of the topics covered are: managing funding partnerships, collabora-

tive decision making, client analysis, scheduling, communication processes, budgeting, distributed work teams, intellectual property and ever-greening. If you plan to work in a cooperative environment to develop learning materials, then this information will help you increase the benefit you will attain from a collaborative initiative.

Presenters Biographies

Lucelle Prindle - Lethbridge Community College

Lucelle Prindle, is administrator of the Centre for Teaching and Learning at Lethbridge Community College. She is responsible for curriculum and instructional development, distributed learning, technology integration, faculty professional development and instructional technology. Lucelle has spent 25 years at the college both as an instructor and administrator and has a B.A. in English, B. Ed, M.A. in Administration and Curriculum and a PhD. In Educational Leadership.

Pat Larson - Northern Lakes College

Pat Larson has worked in the Distance Education field for almost 20 years. She established the Distance Learning High School for Northern Lakes College (formerly Alberta Vocational College - Lesser Slave Lake), and co-chaired Alberta North, a collaborative initiative of 6 Northern Colleges and Athabasca University that provides a network of technologies and support services to Community Access Points (CAPs). Pat also co-authored, *Vision for Change*, a Government document promoting the cooperative integration of technologies and services

across Alberta's Adult Learning system.

For further information about this presentation, please contact larrison@yourfuture.ab.ca or lprindle@raptor.lethbridge.ab.ca

April

April 4, 2000 from 3:30 to 4:30 p.m.

Presenter: Jane Brindley

Topic: Learners' perspectives applied to best practices in distance teaching

Jane Brindley is co-author of **Learning on the Information Highway: A Learners Guide to the Technologies**, produced by the Office of Learning Technologies (OLT). If you missed her at the CADE '98 Conference in Banff, here is an opportunity to learn about her research with distance learners across Canada and their perspectives of learning with distance technologies. Jane interviewed all of the learners for the publication and will talk about this experience and how she has applied what they told her to best practices for teaching.

May

May 9, 2000 from 3:30 to 4:30 p.m.

Virtual Wine and Cheese from down-under with Andy Asselin

The virtual wine and cheese tradition continues on May 9 !!! Each year, before Interface, people gather round and share a virtual sip and nibble. Those attending this session and the Interface conference have a chance to win real fermented libations.

As per usual, attendees are asked about their intent at the conference such as a presentation they might be

Conferences & Workshops

ADETA Professional Development Series 2000 continued from page 14

making, expectations from the conference and so on.

This year, as a special twist, your host, Andy Asselin will be slightly ahead of your time, by almost a day. Presenting live from an undisclosed Australian location, Andy will also field questions about life down under.

So even if you are not attending Interface, this session should be a fun-time for all.

Remember, those attending this session will be eligible for a real wine and cheese draw at the Interface conference.

Andy Asselin has been with Northern Lakes College since 1989. Andy's first distance education course was delivered via audioconferencing. With the arrival of telewriters, allowing audiographic delivery, distance education has become a career commitment. This commitment has earned him several awards, including a Prime Minister's Award for Teaching Excellence in Science, Technology and Mathematics. Andy's role as senior instructor is to encourage teaching excellence for the Distance Learning High School. Andy is currently on a year leave of absence and is enjoying the finest Australian beaches.

L'apprenant au coeur des TIC :
est-ce possible ?



Keeping IT Learner Centred :
Is It Possible ?

CADE's 16th Conference

The 16th Conference of the Canadian Association for Distance Education which we have been preparing with you in mind, will be held on May 3 to 6, 2000 in Québec City.

The theme *Keeping IT Learner Centred: Is It Possible?* invites you to spend a few days examining a key aspect of distance education today, the place accorded the human being, the learner, in the mainframe of educational technology.

To be held against the backdrop of one of North America's most picturesque and historic locations, Québec City knows how to attract and mesmerize you.

Taking place in a francophone context and environment where the language of Molière is the norm, a great deal of communication will be available in English and the Conference personnel and Welcoming Committee will be able to answer your questions in the language of the Bard, Shakespeare. Furthermore, simultaneous translation will be available for major Conference events.

Accept our invitation and peruse our website rhetoric and discover for yourself what to expect at the Canadian Association for Distance Education's 16th Conference.



CANADIAN ASSOCIATION
FOR DISTANCE EDUCATION



For ALL information, please contact the Conference Office :

Ms. Dominique Houde

E-mail: dhoude@agoracom.qc.ca

Telephone: (418) 658-6755

Fax: (418) 658-8850

Or visit the CADE CONFERENCE Website at: <http://www.ulaval.ca/aced2000cade/>.

You'll find here all the necessary info concerning the upcoming annual conference to be held in Québec City from May 3 to 6. Pre-conference workshops will be held on May 3. You can register for the conference and the pre-conference workshops using our website. Register early, before March 15, 2000, to receive a discount!

Nota bene: Visit us often since information will be up-dated continually.

The preliminary program, which will be mailed out on the near future, is already available to you on the website. Take advantage of the opportunity to network with colleagues now and organize to attend the conference.

See you in May in Québec City at the CADE CONFERENCE.

Conferences & Workshops

Expanding the Learning World: A WebCT Project Workshop

May 29 – June 2, 2000

Grande Prairie Regional College is holding a week-long WebCT Project workshop from May 29th to June 2nd. Mornings will feature a range of pedagogical and practical presentations and discussions led by some of Alberta's leading alternative delivery practitioners. Afternoons will be spent in the lab learning WebCT under the direction of U of A's Norm Friesen and working on individual courses and projects. Labs will also be available for evening work.

With the province-wide license enabling all public educational institutions in Alberta to use WebCT, training in the use of this powerful program has become an urgent priority. Come and learn with us, visit the Peace Country at our best time of year, take the opportunity to get your fall preparation done, and enjoy a community of educators with common goals.

Expanding the Learning World is being sponsored by Alberta North. Participants from Alberta North member institutions will pay only \$150 for the week. All others are welcome to attend for a fee of \$300. GPRC can offer residence accommodation and breakfasts and lunches are included in the conference fee. The workshop is limited to 20 people on a "first in line" basis: please register as soon as possible.

Your institution should have received a brochure for this event. If it hasn't reached your desk, contact Cheryl (king@gprc.ab.ca) or Joanne (stiles@lib.gprc.ab.ca) and we will send you the information.



MRC Educational Technology Summer Institute

PanCanadian Petroleum Limited and Mount Royal College are collaborating to sponsor the Third Annual Educational Technology Summer Institute, June 19th to 23rd, 2000. The Institute provides participants with unique and exciting opportunities to become exposed to and involved with educational technology.

The goals of the Summer Institute are to provide instructors with the opportunity to:

- learn about the relationship between curriculum and educational technology;
- prepare and format content for integration into technology-based tools;
- construct a web-based courseware project;
- discuss issues related to technology integration in teaching and learning with colleagues from post-secondary institutions in Alberta

and beyond

For further information, accommodations and registrations, please contact Anne Johnson (ajohnson@mtroyal.ab.ca) or 403-240-6042.

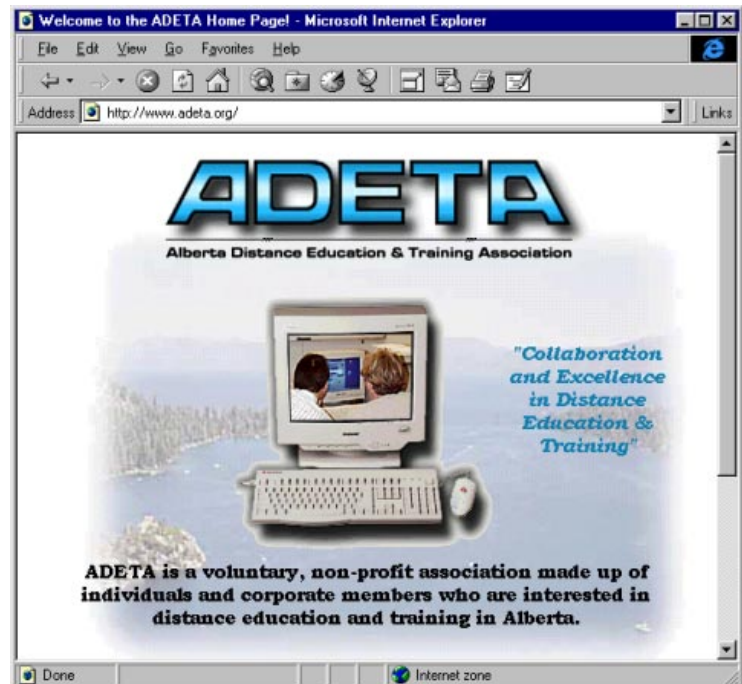
Or visit our web site at:

www.mtroyal.ab.ca/



To find out more about other Conferences that are coming up, check out The Distance Education Clearinghouse conference list at www.uwex.edu/disted.

Check out the new look of the ADETA Website at WWW.ADETA.ORG



Conferences & Workshops



Interface 2000 is shaping up to be a truly exciting event! It will be held at Grant MacEwan College in Edmonton on June 7, 8, and 9, 2000. This conference on learning technologies and their applications will have:

- 4 keynote speakers, including Dr. Lyle Oberg, Minister of Learning for Alberta; Jay Ingram, Co-Host and Producer at the Discovery Channel; Dr. Diana Oblinger, Vice President and Chief Information Officer, University of North Carolina; and Murray Goldberg, President of WebCT Educational Technologies Corporation, Canada.
- a thought-provoking video produced just for the conference by ACCESS TV.
- 12 preconference sessions, including a session on costing online education by Tony Bates from the University of British Columbia.
- 22 hardware and software exhibitors, including Apple, IBM, Sharp's Audio-visual, Telus, and WebCT.
- over 50 concurrent sessions covering a variety of subjects and issues.
- door prizes, including a Dell desktop computer.
- an opportunity to travel back in time at Fort Edmonton Park.
- low registration fees - \$240 is the early-bird conference fee that is valid until April 26, 2000. This fee covers the opening reception, all keynote speakers, exhibits, all the concurrent sessions you can attend, most meals, and a delightful social evening.



Dr. Lyle Oberg



Jay Ingram



Dr. Diana Oblinger



Murray Goldberg

So plan to be in Edmonton June 7, 8, and 9, 2000. And if you haven't sent in a concurrent conference proposal, there is still time. See the conference Web page <http://www.interface2000.gmcc.ab.ca> for details or contact Judith Johnson at johnsonj@admin.gmcc.ab.ca. We would be honoured to receive a conference proposal from every institution in the province and from across Canada.

Interface 2000 Preconference Sessions, February 4, 2000

FULL-DAY Sessions, 9:00 a.m. to 4:00 p.m.

W1: The Learning Manager (TLM): The Complete Cycle Sheila Donaldson, Southern Alberta Institute of Technology, and Enid Watt, The Learning Manager Corporation

W2: WebCT: First Contact Kathy Schwarz, University of Calgary, and Frank Walton, Lethbridge Community College

W3: 50 Ways to Support Your Learners with WebCT Rod Corbett, Bow Valley College, and Jeff Hamilton, Lethbridge Community College

HALF-DAY Sessions, 9:00 a.m. to 12 noon

W4: The Convergence of Classroom and Distance Education David Feist, St. Gabriel Cyber School

W5: Introduction to PowerPoint: Learn the Basics of Electronic Presentations Lynn Ivany, NorQuest College, and Greg Romaniuk, Grant MacEwan College

W6: Creating Effective Web Pages Gord Lacey, Grant MacEwan College

Conferences & Workshops

HALF-DAY Sessions, 1:15 p.m. to 4:15 p.m.

W7: Incorporating Learning Technologies Branch Resources into WebCT Norm Friesen, University of Alberta; Bill Muirhead, Alberta Online Consortium; and Maureen Stanley, Alberta Learning

W8: Advanced PowerPoint Eleanor Frandsen, Northern Alberta Institute of Technology

W9: Measuring the Costs and Benefits of Web-Based Courses Tony Bates, University of British Columbia

W10: Using Program Evaluation to Enhance Educational Impacts Kitty Chugh, University of Calgary, and Rick Jeune, University of Alberta, for the Learning Evaluation and Research Network (LEARN)

W11: Starting from Where We Are and Heading for Who Knows Where: Building a Digital Curriculum Database Elaine Soetaert, Sandi Barber, and Charles Coe, Northern Alberta Institute of Technology (NAIT)

W12: Tour of the University of Alberta's Production Studio and the Telus Centre Doug Tomilson, University of Alberta

For more information and current updates check the Web site at <http://www.interface2000.gmcc.ab.ca>

Key Sponsors:



Contributors:




INTERFACE
2000

"Learning Technologies:
Practice and Promise"

Hosts:

- Alberta Distance Education and Training Association
- CML Provincial Users' Group
- Grant MacEwan College
- NorQuest College
- Northern Alberta Institute of Technology

ADETA



Interface 2000 will be hosted by:

- Alberta Distance Education and Training Association
- CML Provincial Users' Group
- Grant MacEwan College
- NorQuest College
- Northern Alberta Institute of Technology

The key conference sponsors are:

- ACCESS TV
- Apple Canada
- Telus
- WebCT

The above sponsors have helped us to keep the conference fee as low as possible, yet give you good value for your money.

Please join us as a participant, a presenter or both! We have openings in the concurrent sessions and roundtable discussions.

